

DEPARTMENT OF THE ARMY TECHNICAL MANUAL

---

**DIRECT SUPPORT AND GENERAL SUPPORT MAINTENANCE  
REPAIR PARTS AND SPECIAL TOOLS LISTS (INCLUDING  
DEPOT MAINTENANCE REPAIR PARTS AND SPECIAL TOOLS)  
RADIO SET CONTROL GROUP OA-1754/GRC  
FSN 5820-752-0894**

Headquarters, Department of the Army, Washington, DC  
23 April 1973

*Current as of November 1972*

	Paragraph	Page
Section I. INTRODUCTION		
Scope	1-1	2
General	1-2	2
Explanation of columns	1-3	2
Special information	1-4	3
Location of repair parts	1-5	4
Abbreviations (Not applicable)	1-6	4
Reporting of equipment publication improvements	1-7	4
II. REPAIR PARTS LIST		6
III. SPECIAL TOOLS, TEST AND SUPPORT EQUIPMENT (Not applicable)		
IV. INDEX -- FEDERAL STOCK NUMBER AND REFERENCE NUMBER CROSS-REFERENCE TO FIGURE AND ITEM NUMBER		7

\*This manual supersedes TM 11-5820-389-35P, 27 September 1963.

# SECTION I.

## INTRODUCTION

### 1 - 1 . S c o p e

This manual lists repair parts and special tools required for the performance of direct support, general support, and depot maintenance of the OA-1754/GRC. The PCCN for the OA-1754/GRC is GCRAAO for all models.

### 1-2. General

This repair parts and special tools list is divided into the following sections:

*a. Repair Parts List-Section II.* A list of repair parts authorized for the performance of maintenance at the direct support, general support, and depot level. This repair parts list is arranged in alphabetical order.

*b. Special Tools. Test and Support Equipment - Section III.* Not applicable.

*c. Index - Federal Stock Number and Reference Number Cross-Reference to Figure and Item Number - Section IV.* A list, in ascending numerical sequence, of all Federal stock numbers appearing in the listings, followed by a list, in alphameric sequence, of all reference numbers appearing in the listings. Federal stock number and reference numbers are cross-referenced to each illustration figure and item number or reference designation appear-axe.

### 1-3. Explanation of Columns

The following provides an explanation of columns found in the tabular list.

*a. Source. Maintenance and Recoverability Codes (SMR).*

(1) Source code. Indicates the source for the listed items. Source codes are-

Code	Explanation
P -	Repair parts, special tools and test equipment supplied from the GSA/DSA or Army supply system and authorized for use at indicated maintenance categories.
P2 -	Repair parts, special tools and test equipment which are procured and stocked for insurance purposes because the combat or military essentiality, of the end item dictates that a minimum quantity be available in the supply system.
P9-	Assigned to items which are NSA design controlled: unique repair parts, special tools, test, measuring, and diagnostic equipment which are stocked and supplied by the Army COMSEC Logistic System and which are not subject to the provisions of AR 380-41.

Code	<u>Explanation</u>
P10	Assigned to items which are NSA design <b>controlled: special tools, test, measuring,</b> and diagnostic equipment for COMSEC support which <b>are accountable</b> under the provisions of AR 380-41 and which are stocked and supplied by the <b>Army COSMSEC</b> Logistic System.
M -	Repair parts, <b>special</b> tools and test equipment which are not procured or stocked as such in the supply system but are to be manufactured at indicated maintenance levels.
A -	Assemblies which are not procured or stocked as such but are made up of two or more units. Such component units carry individual stock numbers and descriptions, are procured and stocked separately, and can be assembled to form the required assembly at indicated maintenance categories.
X -	Parts and assemblies that are not procured or stocked because the failure rate is normally below that of the applicable end item or component. The failure of such part or assembly should result in retirement of the end item from the supply system.
X1-	Repair parts which are not procured or stocked. The requirement for such items will be filled by the next higher assembly or component.
X2-	Repair parts, special tools and test equipment which are not stocked and have no foreseen mortality The indicated maintenance category, requiring such repair parts will attempt to obtain the <b>parts</b> through cannibalization or salvage. The item may be requisitioned, with exception data, from the end item manager for immediate use.
G -	Major assemblies that are procured with PEMA funds for initial issue only as exchange assemblies at DS and GS level. These assemblies will not be stocked above DS and GS level or returned to depot supply level.

#### NOTE

Cannibalization **or** salvage may be used as a source of supply for any items source coded above except those coded X1 and aircraft support items as restricted by AR 700-42.

(2) *Maintenance code.* Indicates the lowest category of maintenance authorized to install the listed item. Capabilities of higher maintenance categories are considered equal or better. Maintenance codes are -

Code	Explanation
c	Crew/operator
O	Organizational maintenance
F	Direct support maintenance
H	General support maintenance
D	Depot maintenance

(3) *Recoverability code.* Indicates whether un-serviceable items should be returned for recovery or salvage. Items not coded are nonrecoverable. Recoverability codes are-

Code	Explanation
R -	Repair parts (assemblies and components), special tools and test equipment which are considered economically repairable at direct and general support maintenance levels. <b>When</b> the item is no longer economically repairable, it is normally disposed of at the GS level. When supply considerations dictate, some of these repair parts may be listed for automatic return to supply for depot level repair as set forth in AR 710-1 When so listed, they will be replaced by supply on an exchange basis.
S -	Repair parts, special tools and test equipment, and assemblies which are economically repairable at DS and GS activities and which normally are furnished by supply on an exchange basis. When items are determined by a GSU to be uneconomically repairable, they will be evacuated to a <b>depot</b> for evaluation and analysis before final disposition.
T -	High dollar value recoverable repair parts, special tools and test equipment which are subject to special handling and are <b>issued</b> on an exchange basis. Such items will be repaired or overhauled at depot maintenance activities only. No repair may be accomplished at lower levels.
I'--	Repair parts, special tools and test equipment specifically selected for salvage by reclamation units because of precious metal content, critical materials, high dollar value, or reusable casings or castings.

*b. Federal Stock Number.* Indicates the Federal stock number assigned to the item and will be used for requisitioning purposes.

*c. Description* Indicates the Federal item name

and a minimum description required to identify the item. The last line indicates the reference number followed by the applicable Federal Supply Code for Manufacturer (FSCM) in parentheses. The FSCM is used as an element in item identification to designate manufacturer or distributor or Government agency, etc., and is identified in SB 708-42.

*d. Unit of Measure (U/M).* Indicates the standard or basic quantity by which the listed item is used in performing the actual maintenance function. This measure is expressed **by a two-character alphabetical abbreviation**; e.g., ea, in, pr. etc., and is the basis used to indicate quantities and allowances in subsequent columns. When the unit of measure differs from the unit of issue, the lowest unit of issue that will satisfy the required units of measure will be requisitioned.

*e. Quantity Incorporated in Unit.* This column indicates the quantity of the item used in the equipment.

*f. 30-Day DS/GS Maintenance Allowances.*

**NOTE**

Allowances in GS column are for GS maintenance only.

(1) The repair parts indicated by asterisk entries in separate allowance columns for DS and GS represent those authorized for use at that category of maintenance to be requisitioned on an "as required" basis, until stockage is based on demand in accordance with AR 710-2.

(2) Allowance quantities are indicated in the special tool lists section for special tools, TMDE, and other support equipment.

*g. 1-Year Allowances Per 100 Equipments/Contingency Planning Purposes.* Column intentionally left blank.

*h. Depot Maintenance Allowance Per 100 Equipments.* This column indicates opposite the first appearance of each item the total quantity authorized for depot maintenance of 100 equipments.

*i. Illustration.* Not applicable.

**1-4. Special Information**

a. Usable on codes are included in column 3. Uncoded items are applicable to all models. Identification of the usable on codes used in this publication are -

Code	Used on
AC5	OA-1754/GRC

b. The following publications pertain to the OA-1754/GRC and its components:

TM 11-5820-335-10	Operator's Manual: Transmitters Radio T-195:/GKC-19, T-195A/GRC-19, and T-195B/GRC-19
-------------------	---

TM 11-5820-335-20 Organizational Maintenance Manual Transmitter, Radio T-195/GRC-19, T-195A/GRC-19, and T-195B/GRC-19.

TM 11-5820-335-20P Organizational Maintenance Repair Parts and Special Tool Lists: Transmitter Radio T-195/GRC-19, T-195A/GRC-19, and T-195B/GRC-19 DS, GS, and Depot Maintenance Manual: Radio Transmitter T-195/GRC-13, T-195A/GRC-19, and T-195B/GRC-19.

TM 11-5820-335-35 DS, GS, and Depot Maintenance Repair Parts and Special Tool Lists: Transmitter, Radio T-195/GRC-19, T-195A/GRC-19, and T-195B/GRC-19.

TM 11-5820-389-12P Operator's and Organizational Maintenance Repair Parts and Special Tools List: Radio Set Control Group OA-1754/GRC.

**1-5. Location of Repair Parts**

a. This manual contains one cross-reference index (sec IV) to be used to locate a repair part when either the Federal stock number or reference number (manufacturer's part number) is known. The first column in the index is prepared in numerical or alphanumeric sequence in ascending order. The reference numbers (manufacturer's part numbers) are listed immediately following the last listed Federal stock number in the index of Federal stock numbers.

b. When the Federal stock number or reference number is known, follow the procedures given in (1) and (2) below.

(1) Refer to the index of Federal stock numbers (sec IV) and locate the Federal stock number or reference number. The FSN and reference number are cross-referenced to the applicable figure and item number or reference designation.

(2) Refer to the repair parts list (sec II) and locate the figure number (col 10a) and item number or reference designation (col 10b) as noted in the FSN index.

c. When the figure and item number or reference designation are known, scrutinize columns 10a and 10b of the repair parts list (sec II) until the item is located.

d. When the FSN, reference number, figure number, item number and reference designation are not known, scrutinize column 3 of the repair parts list (sec II), which is arranged in alphabetical order.

**1-6. Abbreviations**

Not applicable.

1-7. Reporting of Equipment

**Publication**

**Improvements**

The reporting of errors, omissions, and recommendations for improving this publication by the individual user is encouraged. Reports should be submitted on DA Form 2028 (Recommended Changes to Publications) and forwarded direct to Commander, US Army Electronics Command, ATTN: AMSEL-MA-CR, Fort Monmouth, N.J., 07703.

**(Next printed page is 6.)**

SECTION II

T M 1 1 - 5 8 2 0 - 3 8 9 - 3 4 P

(1) SMR CODE	(2) FEDERAL STOCK NUMBER	(3) DESCRIPTION REFERENCE NUMBER & MFR. CODE USABLE ON CODE	(4) UNIT OF MEAS	(5) QTY INC IN UNIT	(6) 30-DAY DS MAINT ALLOWANCE			(7) 30-DAY GS MAINT ALLOWANCE			(8) LTR ALW PER 100 EQUIP CNTGCT	(9) DEPOT MAINT ALW PER 100 EQUIP	(10) ILLUSTRATION	
					(a)	(b)	(c)	(a)	(b)	(c)			(a)	(b)
					1-20	21-50	51-100	1-20	21-50	51-100			FIGURE NO.	ITEM NO.
P--F--	6145-160-5027	CABLE, POWER, ELECTRICAL WS-16/U NO-REF-DESIG STRANDED; NO. 18 AWG; 65 STRANDS, NO. 36 AWG, COPPER CONDUCTOR; TINNED FINISHED 1000V MAX; MS16U (80058)	FT	2	*	*	*	*	*	*		20		
P--O--	5920-814-5446	CAP, ELECTRICAL NO-REF-DESIG MGLDED..... BLACK PHENOLIC: 2674 (88243)	EA	1	*	*	*	*	*	*		3		
P--F--	5935-549-2646	CONNECTOR, PLUG, ELECTRICAL U79/U NO-REF-DESIG U-79/U: SCC25168A (80063)	EA	1	*	*	*	*	*	*		3		
P--F--	5935-283-2950	CONNECTOR, PLUG, ELECTRICAL U-77/U NO-REF-DESIG 10 MALE TYPE CONT: SC069418 (80063)	EA	1	*	*	*	*	*	*		3		
P--F--	5935-080-1781	PLUG, TIP NO-REF-DESIG 1 CONT: MALE..... BANANA TYPE: 2676 (88243)	EA	1	*	*	*	*	*	*		1		
P--F--	5940-283-5386	POST, BINDING U-106/U NO-REF-DESIG..... U-106/U: SCC16495 (80063)	EA	1	*	*	*	*	*	*		1		
P--F--	5945-811-4396	RELAY NO-REF-DESIG HERMETICALLY SEALED: 1 MECHANISM; 6 CONT; SPDT; 2 AMP, 28VDC RESISTANCE; 2500 OHMS COIL RESISTANCE: 1001MS (82415)	EA	1	*	*	*	*	*	*		3		
P--O--	5940-283-5393	SHIELD, BINDING POST NO-REF-DESIG..... RUBBER: SCC762021 (80063)	EA	1	*	*	*	*	*	*		10		
P--F--	5930-615-7896	SWITCH, TOGGLE NO-REF-DESIG SPST:..... MS2509822 (81349)	EA	1	*	*	*	*	*	*		5		

## SECTION IV.

TM11-5820-389-34P

INDEX - FEDERAL STOCK NUMBER AND REFERENCE NUMBER  
CROSS-REFERENCE TO FIGURE AND ITEM NUMBER

STOCK NUMBER	FIGURE NO.	ITEM NO.	STOCK NUMBER	FIGURE NO.
5920-814-5448			5940-283-5386	
5930-615-7896			5940-283-5393	
5935-080-1781			5945-811-4396	
5935-283-2950			6145-163-5027	
5935-549-2646				

REFERENCE NO.	MFR CODE	FIG. NO.	ITEM NO.	REFERENCE NO.	CODE NO.
MS2509822	81349			<b>WS16U</b>	80058
SCC16495	80063			1001HS	82415
SCC25158A	80063			2674	88243
SCC762021	80063			2676	88243
SCD69418	80063				

**By Order of the Secretary of the Army:**

CREIGHTON W. ABRAMS  
*General, United States Army*  
Chief of Staff

Official:

VERNE L. BOWERS

*Major General, United States Army*  
*The Adjutant General*

Distribution:

To be distributed in accordance with DA Form 12-51, (qty rqr block no. 855) Direct and General Support maintenance requirements for OA-1754/GRC.

\* U.S. GOVERNMENT PRINTING OFFICE: 1973-769619/607

**END**

**11-26-82**

**DATE**

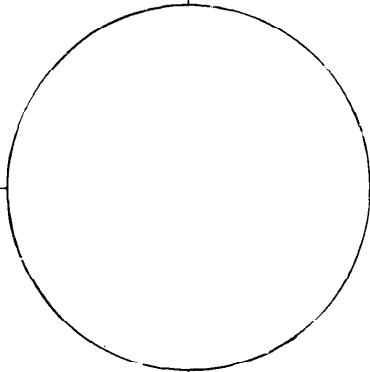
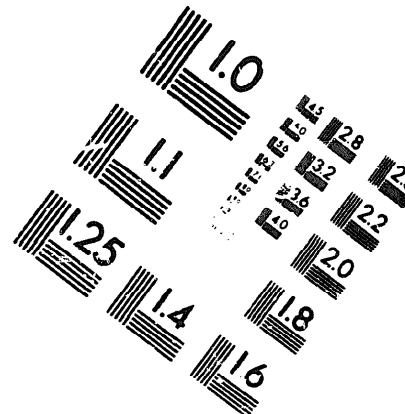
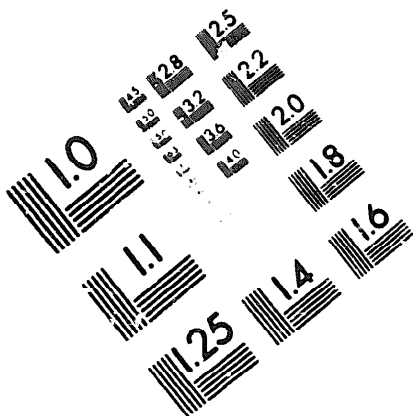






DEPARTMENT OF THE ARMY

MICROFORM TEST TARGET



150 MM

1.0 mm (e= 0.81 mm)  
ABCDEFGHIJKLMN OPQRSTUVWXYZ 1234567890  
abcdefghijklmnopqrstuvwxyz \$%&' /%# 1/2 1/4 3/4 — = + x & @ \*

1.5 mm (e= 1.09 mm)

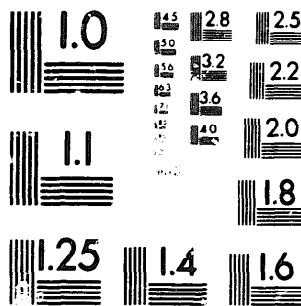
ABCDEFGHIJKLMN OPQRSTUVWXYZ 1234567890  
abcdefghijklmnopqrstuvwxyz \$%&' /%# 1/2 1/4 3/4 — = + x & @ \*

2.0 mm (e= 1.37 mm)

ABCDEFGHIJKLMN OPQRSTUVWXYZ  
abcdefghijklmnopqrstuvwxyz  
1234567890 \$%&' /%# 1/2 1/4 3/4 — = + x & @ \*

2.5 mm (e= 1.77 mm)

ABCDEFGHIJKLMN OPQRSTUVWXYZ  
abcdefghijklmnopqrstuvwxyz  
1234567890 \$%&' /%# 1/2 1/4 3/4 — = + x & @ \*



1.0 mm (e= 0.81 mm)  
ABCDEFGHIJKLMN OPQRSTUVWXYZ 1234567890  
abcdefghijklmnopqrstuvwxyz \$%&' /%# 1/2 1/4 3/4 — = + x & @ \*

1.5 mm (e= 1.09 mm)

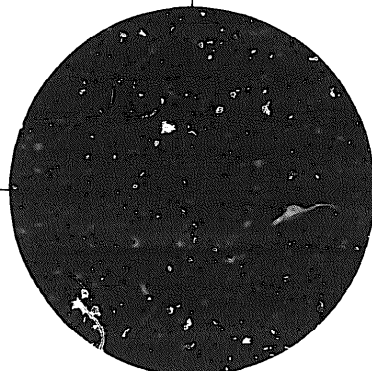
ABCDEFGHIJKLMN OPQRSTUVWXYZ 1234567890  
abcdefghijklmnopqrstuvwxyz \$%&' /%# 1/2 1/4 3/4 — = + x & @ \*

2.0 mm (e= 1.37 mm)

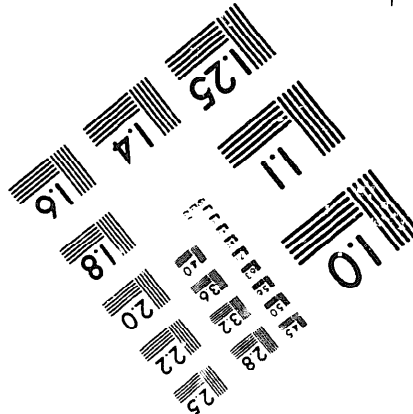
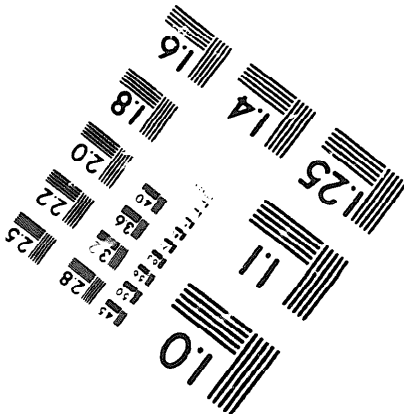
ABCDEFGHIJKLMN OPQRSTUVWXYZ  
abcdefghijklmnopqrstuvwxyz  
1234567890 \$%&' /%# 1/2 1/4 3/4 — = + x & @ \*

2.5 mm (e= 1.77 mm)

ABCDEFGHIJKLMN OPQRSTUVWXYZ  
abcdefghijklmnopqrstuvwxyz  
1234567890 \$%&' /%# 1/2 1/4 3/4 — = + x & @ \*



200 MM



250 MM